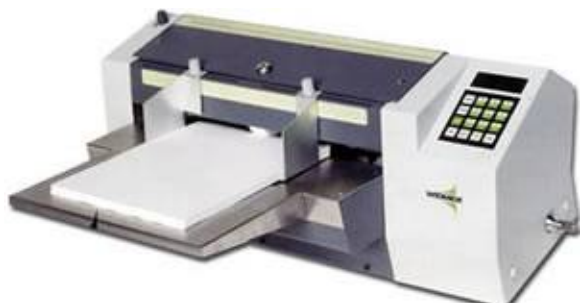


Check Signer Store

Phone: 1-866-432-0042 / INT'L 1-718-859-0917 Fax: 718-228-7476 We Will Match Any Current Web Advertised Price!

Widmer RS-MN Manually Operated Seven Digit Imprinter

http://www.checksignerstore.com/Manually_Operated_Seven_Digit_Imprinter_168_10130.html



PRODUCT ID # : 10130

PRODUCT SPECIFICATION

Max. Form Length	16 in.
Max. Form Width	15.5 in.
Min. Form Length	2.875 in.
Min. Form Width	2.875 in.
Voltage	120 Volt, 60 Cycle volts

DIMENSIONS

Weight:	55.00 lbs.
Width:	24.50 inches
Length:	20.00 inches
Height:	9.00 inches

OUR PRICE

LIST PRICE :	\$5179.00
INSTANT SAVING :	- \$1990.00
SALES PRICE :	\$3189.00
SHIPPING CHARGE :	FREE

PRODUCT DESCRIPTION

Widmer RS MN Manually Operated Seven Digit Imprinter No Text The Widmer RS MN document signer is the text free base model for manual document signing that gets your jobs done quickly and efficiently. The RS MN is loaded with helpful features such as printing the current date on the document in addition to a seven digit number the RS MN imprinting machine signs and endorses checks and documents from 2.875 to 15.5 wide and 2.875 to 16 long. up to 9 pre programmed jobs can be stored for different types of documents. The Widmer RS MN document signer must set the date manually each time. For security, the unit can be key locked to prevent unauthorized use. A signature form will be sent upon purchase to be submitted to the manufacturer. This form will be used to create a customized signature plate. Also available for 220 voltage. Specifications Dimensions 9 x 24 1 2 x 12 20 extension tray Weight 55 lbs. Shipping Weight 65 lbs. Maximum Speed 12,000 hr with 3 1 2 check Maximum Paper Size 15 1 2 x 16 Minimum Paper size 2 7 8 x 2 7 8 Power 120V 60Hz Hopper Capacity 200 Single Ply Optimum 300 Single Ply Maximum Roller Life 750,000 Impression estimated Drum Selection Imprint, Signature, Date. Extras for RS Series Only Single signature and saddle Extra signature Border or background 4 lines of text and saddle Each additional line of text Logo Saddle, blank S O Saddle, blank D Date or N Number Saddle, blank MN Number Saddle, blank DMN Date and Number Drum, S O Drum, wheels date D Drum, manual set wheel number MN Drum, manual set wheel date and wheel number DMN Ink roller black Standard Ink roller, Red or blue Ink roller, tri color blue,red,purple Saddle with base lock type segments date or number Saddle with base lock type segments date and number Double document detector

