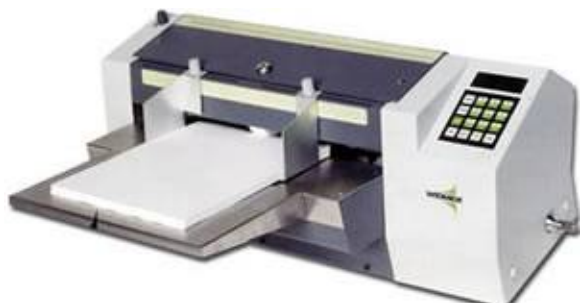


# Check Signer Store

Phone: 1-866-432-0042 / INT'L 1-718-859-0917 Fax: 718-228-7476 We Will Match Any Current Web Advertised Price!

## Widmer RS-DMN Manually Operated Seven Digit Dating Imprinter

[http://www.checksignerstore.com/Manually\\_Operated\\_Seven\\_Digit\\_Dating\\_Imprinter\\_168\\_10131.html](http://www.checksignerstore.com/Manually_Operated_Seven_Digit_Dating_Imprinter_168_10131.html)



PRODUCT ID # : 10131

### OUR PRICE

LIST PRICE :	\$5371.00
INSTANT SAVING :	- \$1172.00
SALES PRICE :	<b>\$4199.00</b>
SHIPPING CHARGE :	<b>FREE</b>

### PRODUCT DESCRIPTION

Widmer RS DMN Manually Operated Seven Digit Dating Imprinter The Widmer RS DMN is a manual document signer loaded with helpful features which get your job done quickly and efficiently in low volumes. Up to 9 pre programmed jobs can be stored in the machine. This machine will print a seven digit number and text on any document plus the current date, which you must set manually. Please specify the desired seven digit number. A signature form will be sent upon purchase to be submitted to the manufacturer. This form will be used to create a customized signature plate. Also available for 220 voltage. Specifications Dimensions 9 x 24 1 2 x 12 20 extension tray Weight 55 lbs. Shipping Weight 65 lbs. Maximum Speed 12,000 hr with 3 1 2 check Maximum Paper Size 15 1 2 x 16 Minimum Paper size 2 7 8 x 2 7 8 Power 120V 60Hz Hopper Capacity 200 Single Ply Optimum 300 Single Ply Maximum Roller Life 750,000 Impression estimated Drum Selection Imprint, Signature, Date. Extras for RS Series Only Single signature and saddle Extra signature Border or background 4 lines of text and saddle Each additional line of text Logo Saddle, blank S O Saddle, blank D Date or N Number Saddle, blank MN Number Saddle, blank DMN Date and Number Drum, S O Drum, wheels date D Drum, manual set wheel number MN Drum, manual set wheel date and wheel number DMN Ink roller black Standard Ink roller, Red or blue Ink roller, tri color blue,red,purple Saddle with base lock type segments date or number Saddle with base lock type segments date and number Double document detector

### PRODUCT FEATURES

### PRODUCT SPECIFICATION

Max. Form Length	16 in.
Max. Form Width	15.5 in.
Min. Form Length	2.875 in.
Min. Form Width	2.875 in.
Voltage	115V, 60HZ volts

### DIMENSIONS

Weight:	55.00 lbs.
Width:	24.50 inches
Length:	20.00 inches
Height:	9.00 inches